

LEONARDO DA VINCI Programme II PHASE 2000-2006

Il progetto è stato finanziato con il sostegno della Comunità Europea.
Il contenuto del presente progetto non riflette necessariamente
la posizione della Comunità Europea o dell' Agenzia Nazionale
e non impegna in alcun modo la loro responsabilità.

Project "PSYCHO RESCUE"

GENERAL WORKPLAN



ORGANIZATION OF THE GENERAL WORK PLAN

two criteria:

Logical-functional, the Project is subdivided in 5 Work Packages (indicated with the abbreviation WP)

Operating-temporal, developed across the timetable of the activity

WPT

Work Package Transversal

- ◆ The activity of *Project Management* is cross-cutting to all of the project
- ◆ indicated with the abbreviation **WPT** followed by a number: eg
WPT + (1...)

WPT - PROJECT MANAGEMENT

WPT1 - Methodology, Planning and team building

WPT2 - Monitoring activities, qualitative evaluation of the project, technical assistance and administrative monitoring activities

WPT3 - Check-up, revision of planning and Interim Reporting activities

WPT4 - Consolidation and dissemination of outcomes and Final Reporting

ORGANIZATION OF THE GENERAL WORK PLAN

WORK PACKAGES

W

WP 1 - RESEARCH AND ANALYSIS OF CONTEXT

WP 2 - RESEARCH AND ANALYSIS OF NEEDS

P

WP 3 - MODELLING

WP 4 - TESTING AND VALIDATION

T

WP 5 - PRODUCTION AND DISSEMINATION

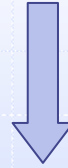
LEADER PARTNER

in cooperation with
Coordinator Partners



- Define methodologies and tools for the research activities
- Collect products and documents
- Elaborate the methodology
- Prepare the final comparative analysis and researchs

COORDINATORS PARTNERS



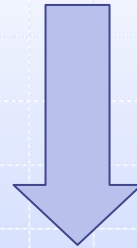
Coordination and support for
COOPERATORS PARTNERS



and in cooperation with
COOPERATORS PARTNERS:

- Collect data and informations
- Select experts and institutions to interview for the realization of national case studies
- Coordinate the realization and production of research products

COOPERATORS PARTNERS



- Collect data and information
- Carry out case studies
- Carry out interviews
- Contribute to the training methodology planning
- Contribute to the realization of final products

WP-1

RESEARCH AND ANALYSIS OF
CONTEXT

2nd PHASE

WP1

RESEARCH AND ANALYSIS OF CONTEXT

Aimed to:

Investigate and study, in the various Partner Countries, contexts, service typologies and relative problems

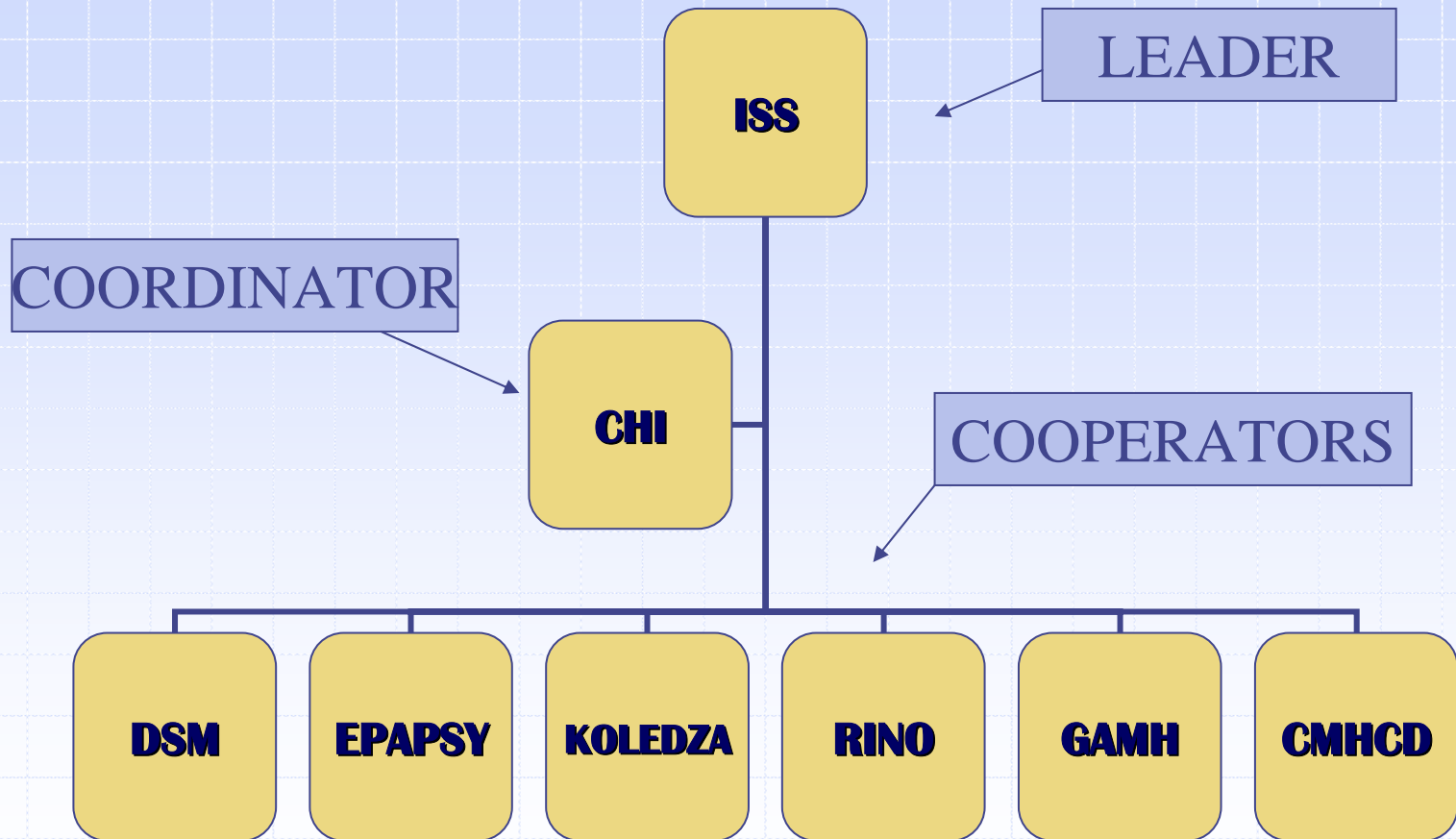
WP1

RESEARCH AND ANALYSIS OF CONTEXT

- ✓ Predispose means for the analysis of sectorial and territorial contexts and main features of the Services:
 - Policy on Mental Health
 - Typologies of Psychiatric Care
 - Features (Governance; Financing; Resources; Management)
 - Systems and training's offer for the professional profiles involved (Paths; Certifications; Competences)

ORGANIZATION CHART

RESEARCH AND ANALYSIS OF CONTEXT



WP-2

RESEARCH AND ANALYSIS of
NEEDS

3rd PHASE

WP2

RESEARCH AND ANALYSIS of NEEDS

On the basis of WP-1 input, is aimed to:

Study in depth the framework of sectorial competencies and needs that are expressed by Workers and Managers

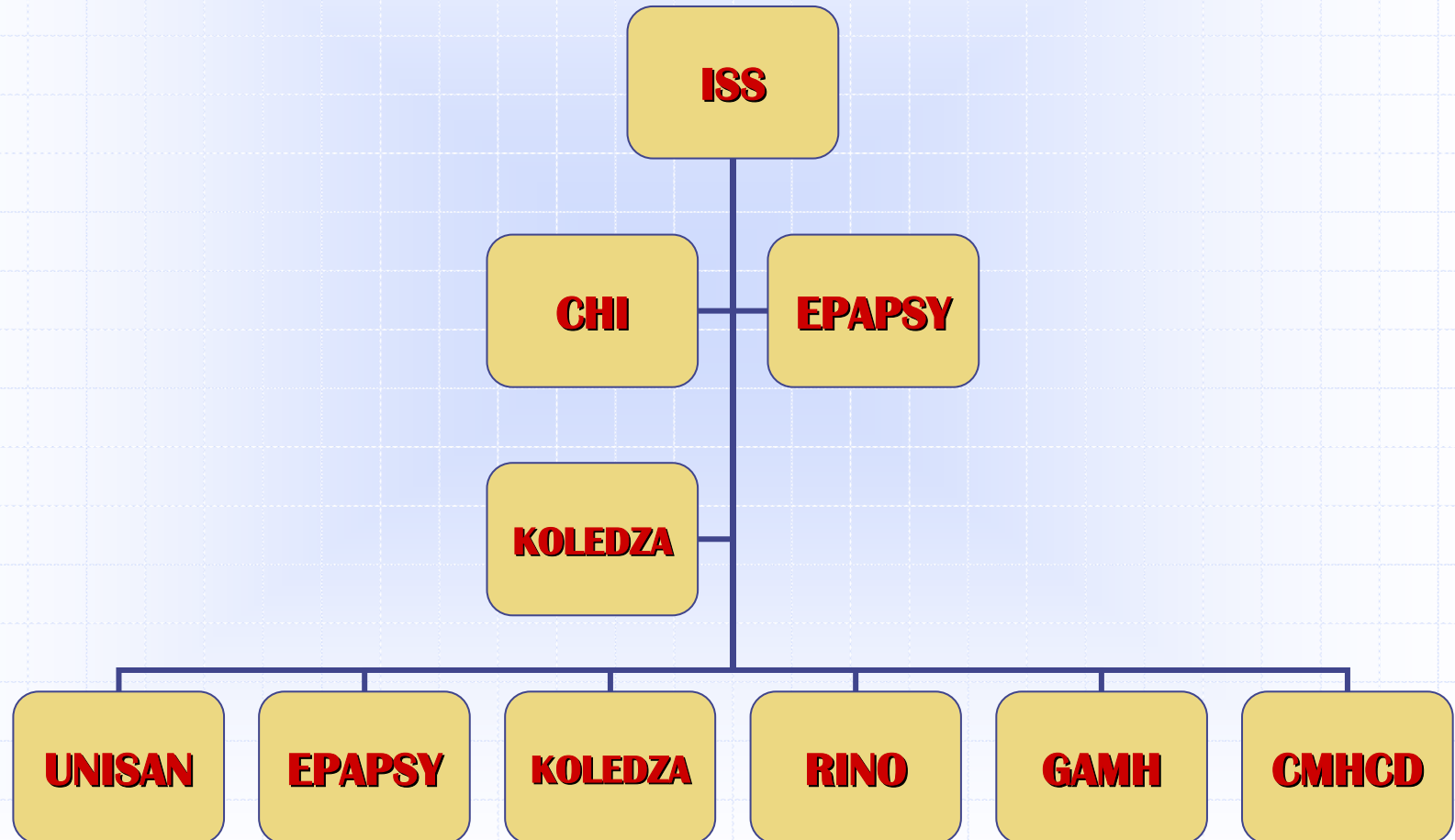
WP2

RESEARCH AND ANALYSIS of NEEDS

- ◆ Point out:
 - the training lacks and
 - the specific competencies to be achieved
- ◆ Share the knowledge which already exists in partner's countries of
 - significant training methods and
 - good practices
- ◆ Promote and support
 - the exchange of expertise and
 - competencies
- ◆ Set up a framework to definite
 - the professional profile and
 - "ad hoc" training paths and tools

ORGANIZATION CHART

WP2 - RESEARCH AND ANALYSIS OF NEEDS





WP-3

MODELLING

4nd PHASE

WP3

MODELLING

Aimed to:
Set methodologies,
models and instruments which are
focused on definition of the
professional profile and to its
confirmation by institutional
subjects involved

WP3

MODELLING

To set:

- the training's procedure
- flexible training's paths (in lifelong learning point of view)
- methodologies, models and tools of training

To share

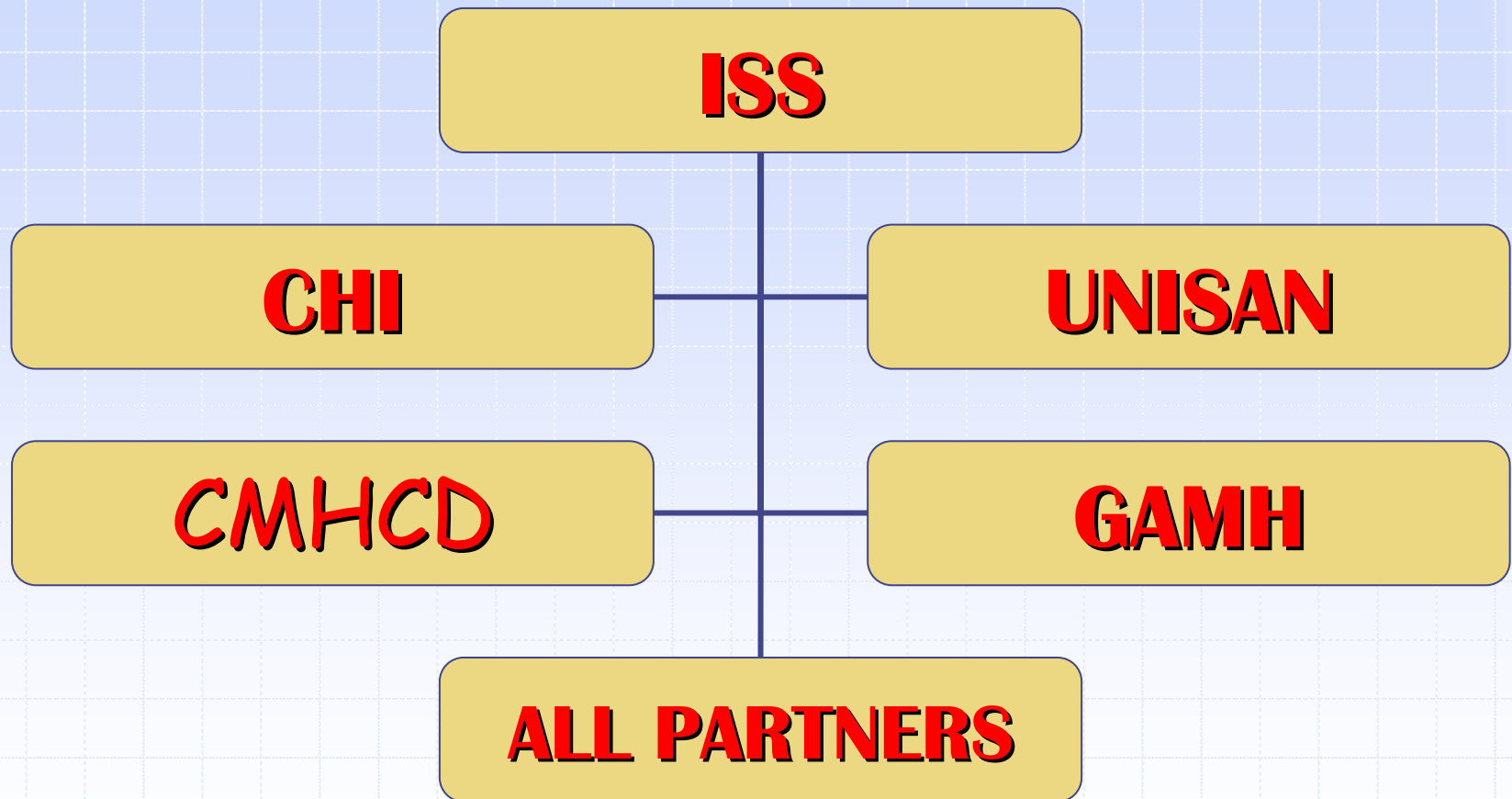
- language and methodology
- planning and evaluation's instruments

To disseminate:

- the model
- the training's instruments
- the professional profile

ORGANIZATION CHART

WP3 - MODELLING



Results

WP3 - MODELLING

Accomplishment of:

- a workshop of comparison between the partners
 - a seminar with both experts and trainers and institutional representatives
-
- ◆ UFC: Creditable Formative Units and Models
 - ◆ Mapping of the competencies
 - ◆ The prototype of a route on CD-ROM



WP-4

**TESTING, SHARING AND
VALIDATION**

5nd PHASE

WP4

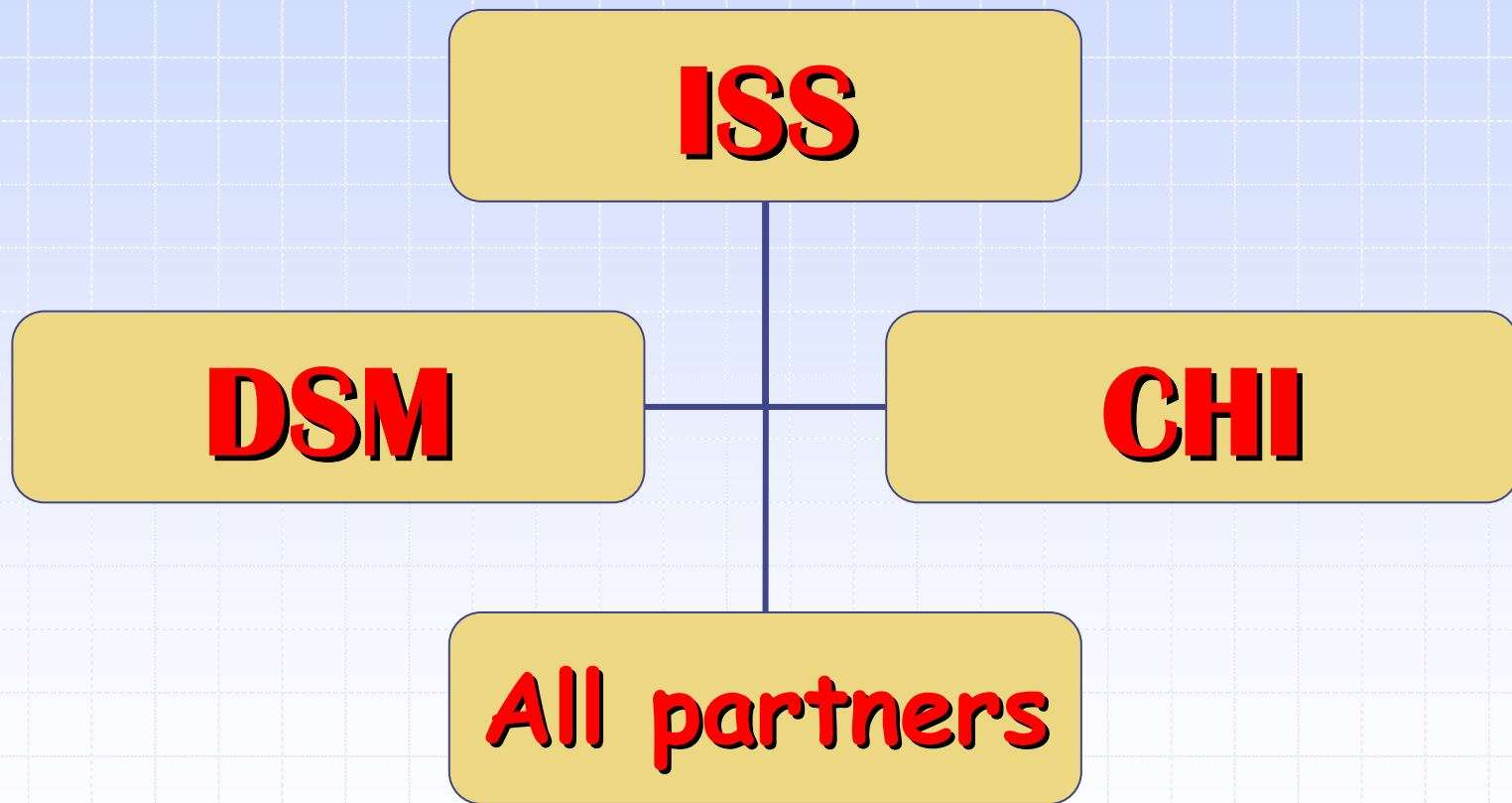
TESTING, SHARING AND VALIDATION

Aimed to:

- ◆ Test the professional profile and the formative instruments that were produced
- ◆ Submit these results to the attention of the key actors of the area, of the final beneficiaries and of the trainers
- ◆ Validate the methodology, the formative route and the teaching subsidies
- ◆ Create the conditions for the acquisition of skills adapted aside of workers, structures and training facility

ORGANIZATION CHART

WP4 - TESTING, SHARING AND VALIDATION





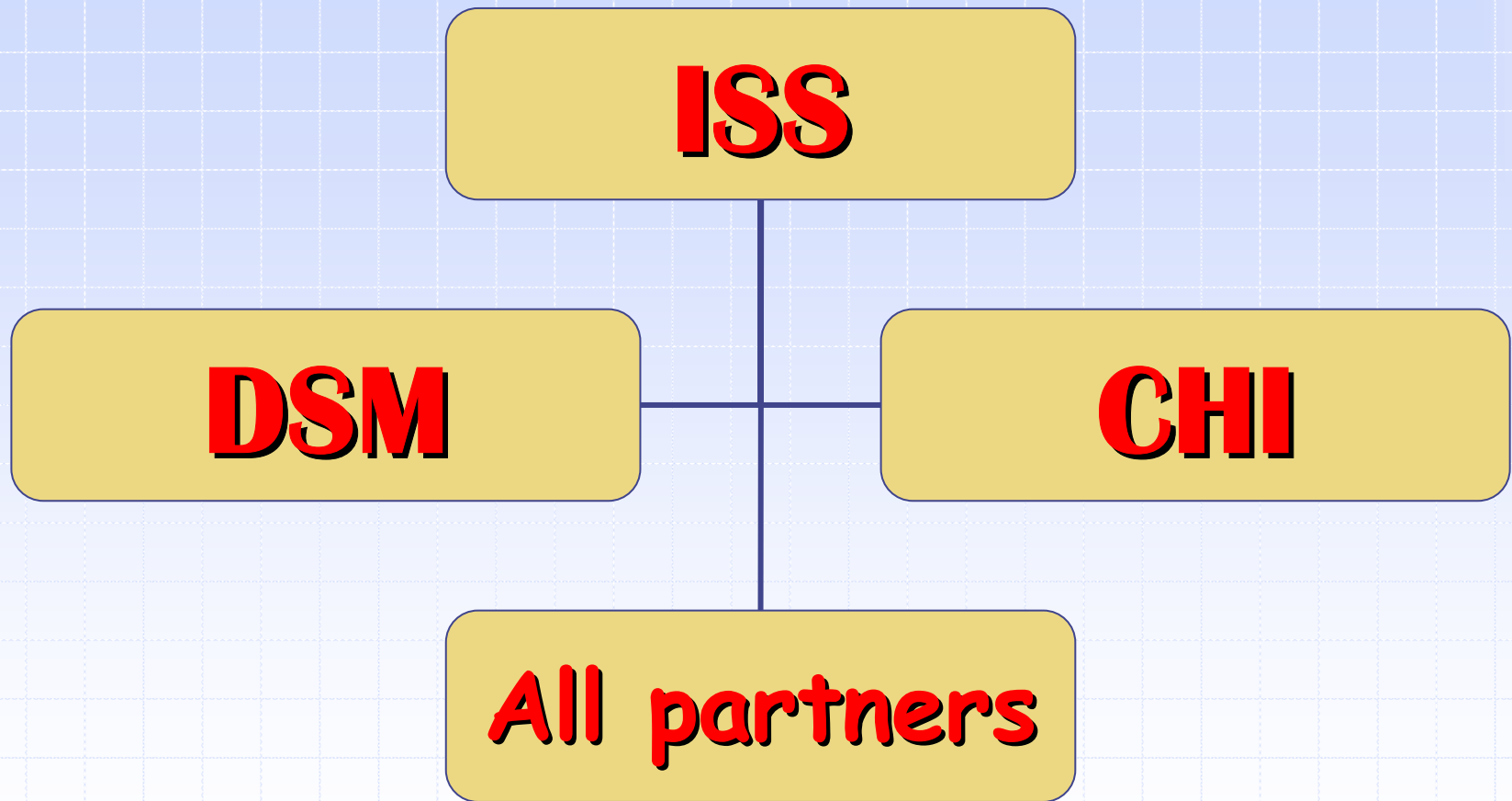
WP-5

**PRODUCTION AND
DISSEMINATION**

6nd PHASE

ORGANIZATION CHART

WP5 - PRODUCTION AND DISSEMINATION



WP5

Production and Dissemination

- ◆ Production of a Brochure and of a Handbook
- ◆ Production of Models and tools of learning (on paper and CD ROM) to distribute the key-actors of the area

WP5

Production and Dissemination

◆ Propose Guidelines

- containing good practices, models and tools of planning, organization, management and monitoring the therapeutic results and follow-up
- capable of supporting the quality and the clarity of the services distributed,
- strengthening the motivation of the workers
- as support and continuous check of the interventions
- Bounding the risks of burn-out and mobbing to damage of staff, structures and users.

WP5

Production and Dissemination

- ◆ Accomplishment of a final conference of presentation and spread of the results of the project and of sensitization of key-actors in the area of the mental health